



Investors Information Meeting

(Fiscal Year 2004 Ended March 31 2005)

May 16 2005



ARIAKE JAPAN Co.,Ltd



Contents

- | | | | |
|----|--|-----|---|
| 3. | FY.2004 Operating Results (Consolidated) | ■ | Ordinary Income Trends |
| 4. | FY.2004 Operating Results (Non-Consolidated) | ■ | Ordinary Income Ratio (Consolidated) |
| 5. | Net Sales | 12. | Cash Flows |
| 6. | Net Sales (Industrial Classification) | 13. | Capital Expense |
| 7. | Net Sales (Industrial Classification Non-Consolidated) | 14. | Depreciation Expense |
| 8. | Operating Income Trends | 15. | Natural Seasoning Product Market
(Beef, Pork, Chicken) |
| 9. | Operating Income Ratio (Consolidated) | 16 | Contact |



Consolidated Operating Result

(Mil. Yen)

	Mar.2005	Mar.2004	+/-	Y-Y	Mar.2006(E)
Net Sales	20,171	19,458	713	3.6	22,000
Operating Income	5,289	5,718	△429	△ 7.5	6,300
Operating Income Ratio	26.2	29.4	—	△ 3.2	28.6
Ordinary Income	5,342	5,930	△ 588	△ 9.9	6,300
Ordinary Income Ratio	26.5	30.5	—	△ 4.0	28.6
Net Income	3,123	3,419	△ 296	△ 8.7	3,700
EPS(YEN)	94.92	114.29	—	—	114.61

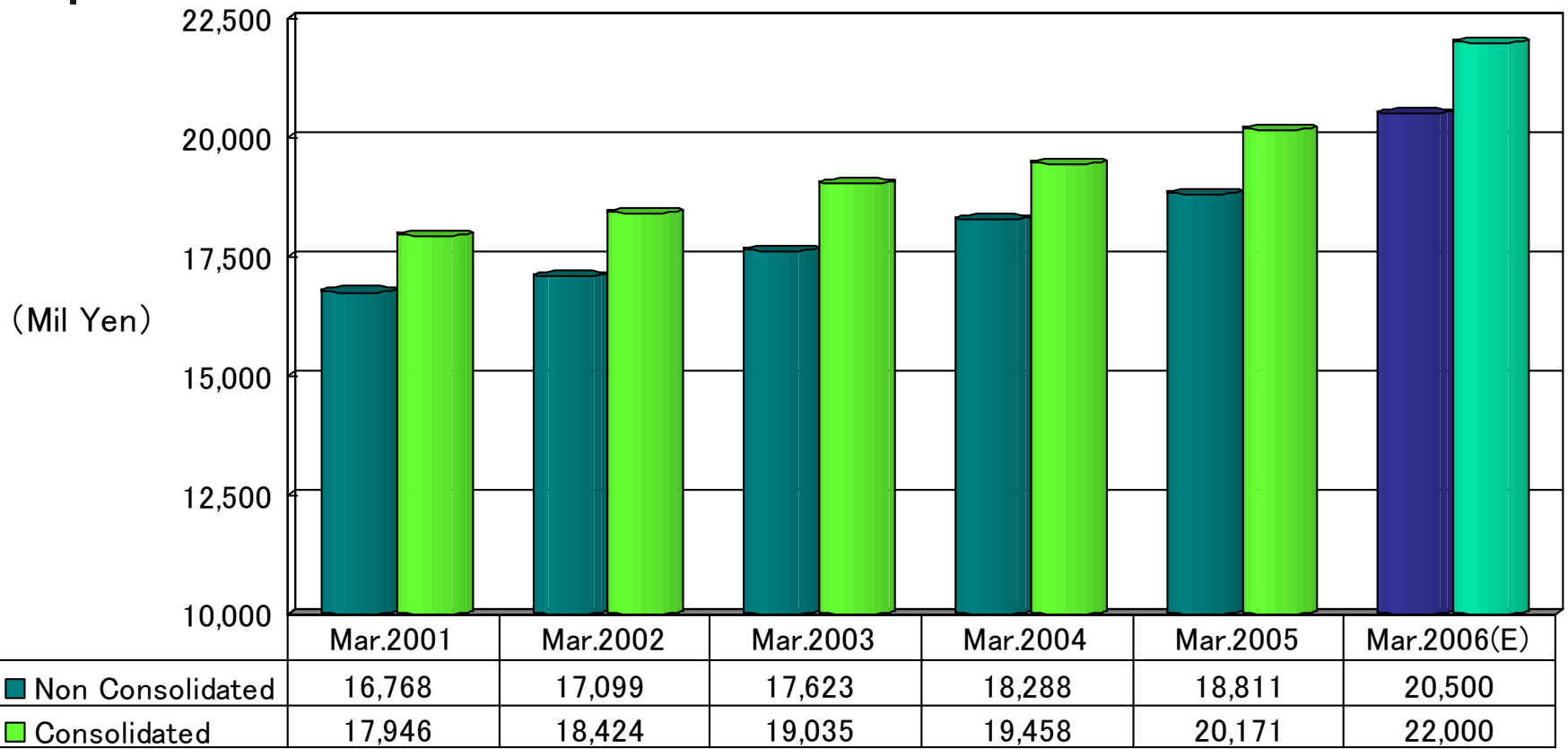


Operating Result (Non Consolidated)

(Mil. Yen)

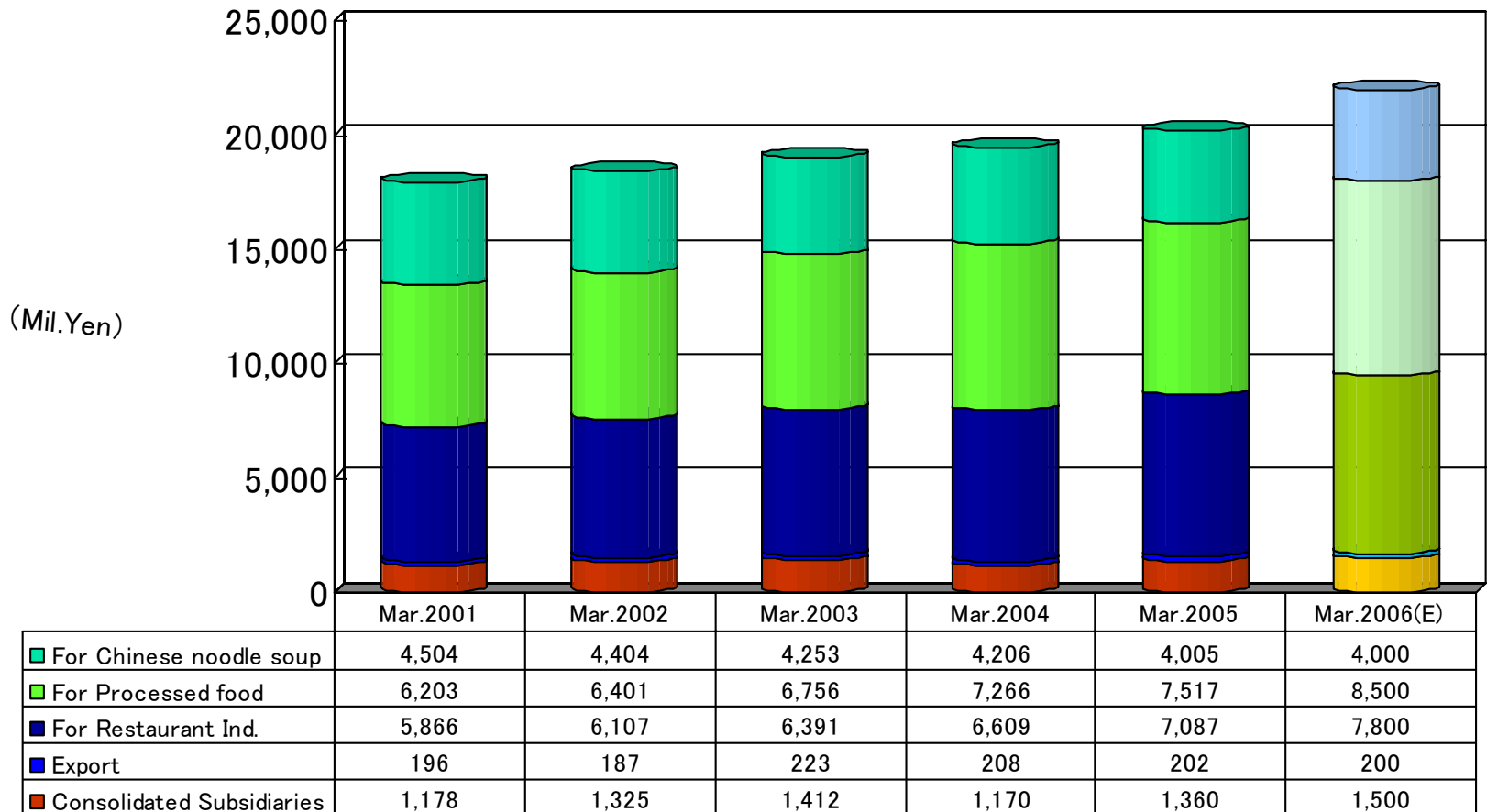
	Mar.2005	Mar.2004	+/-	Y-Y	Mar.2006(E)
Sales	18,811	18,288	523	2.9	20,500
Operating Income	5,154	5,574	△419	△ 7.5	6,140
Operating Income Ratio	27.4	30.5%	—	△ 3.1	30.0
Ordinary Income	5,218	5,813	△ 595	△ 10.2	6,150
Ordinary Income Ratio	27.7	31.8%	—	△ 4.1	30.0
Net Income	3,077	3,343	△ 266	△ 7.9	3,580
EPS (Yen)	93.51	111.70	—	—	110.90

Net Sales

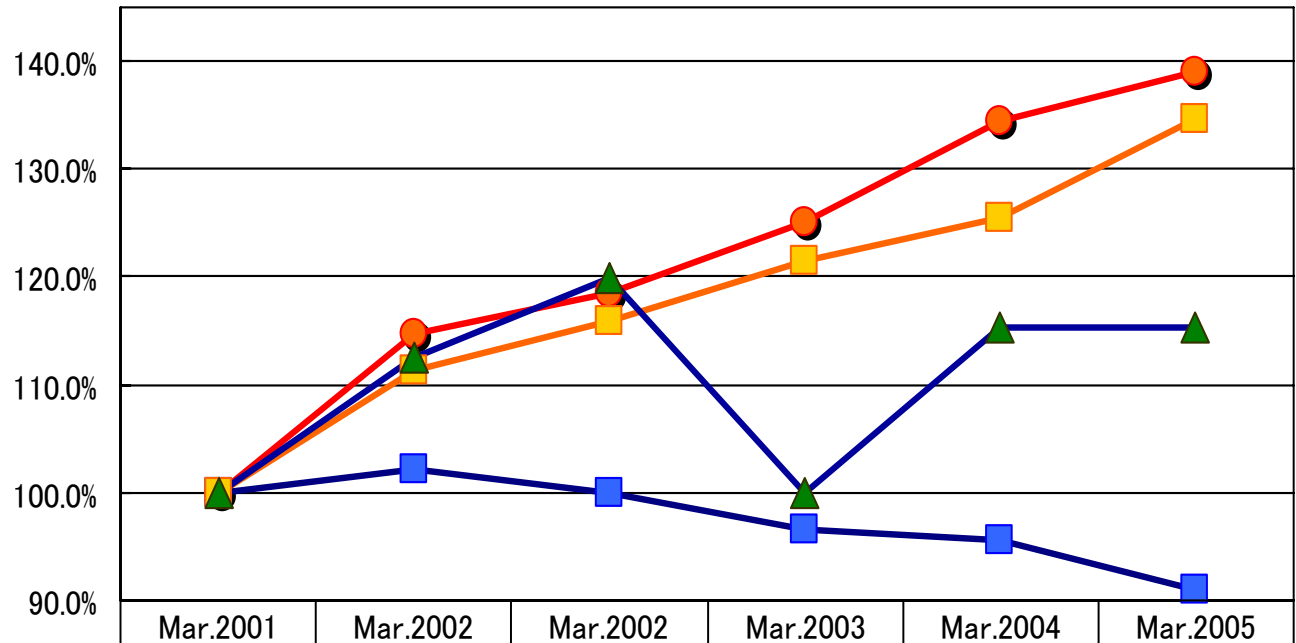


※平成18年3月データは計画

Net Sales (Industrial Classification)

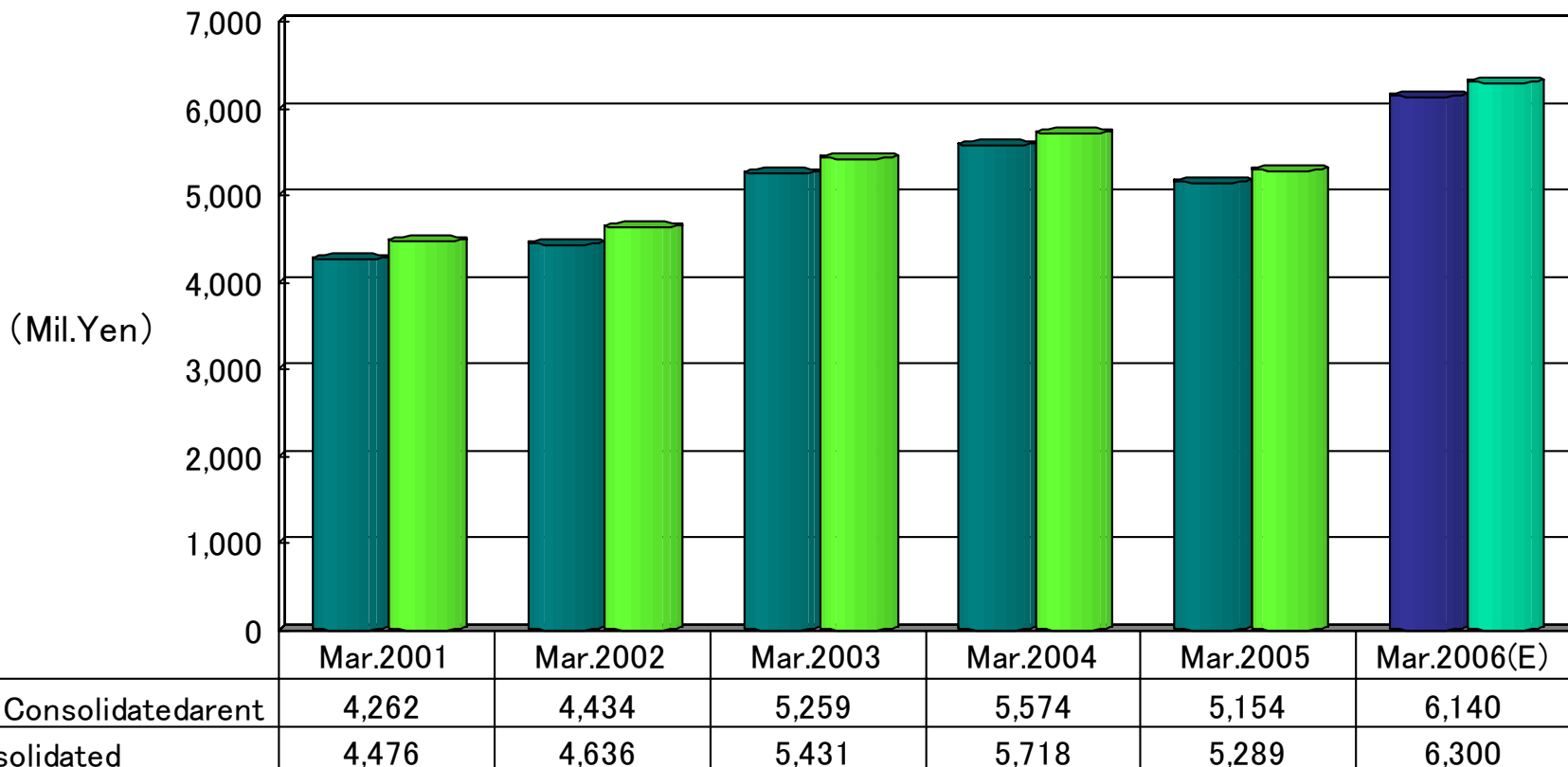


Net Sales (Mar.2001 = 100%)

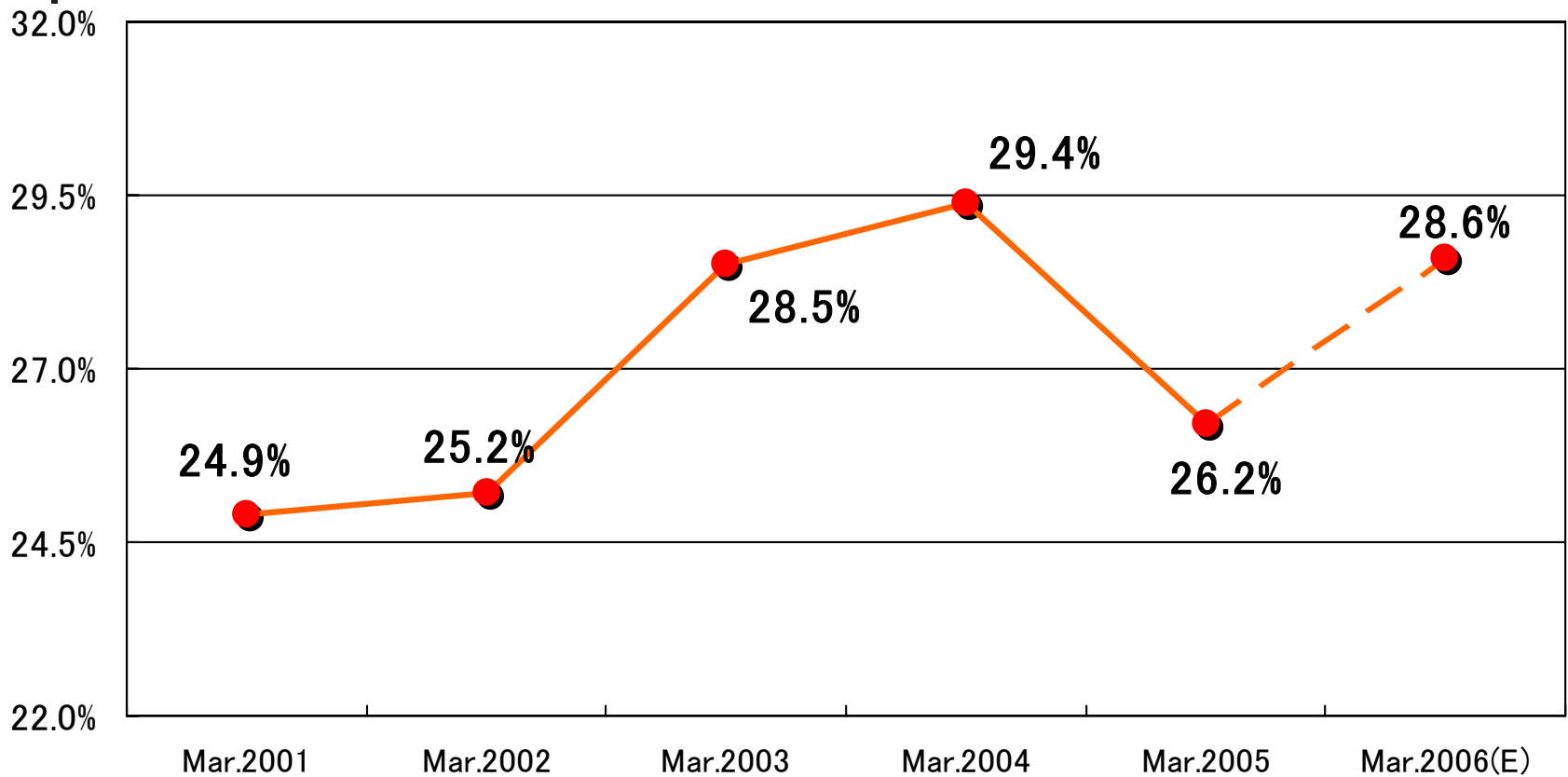


■ Instant Noodle	100.0%	102.2%	100.0%	96.5%	95.5%	90.9%
● Processed Food	100.0%	114.8%	118.5%	125.0%	134.5%	139.1%
■ Restaurant Ind.	100.0%	111.4%	116.0%	121.4%	125.5%	134.6%
▲ Consolidated Subsidiaries	100.0%	112.5%	119.9%	100.0%	115.4%	115.4%

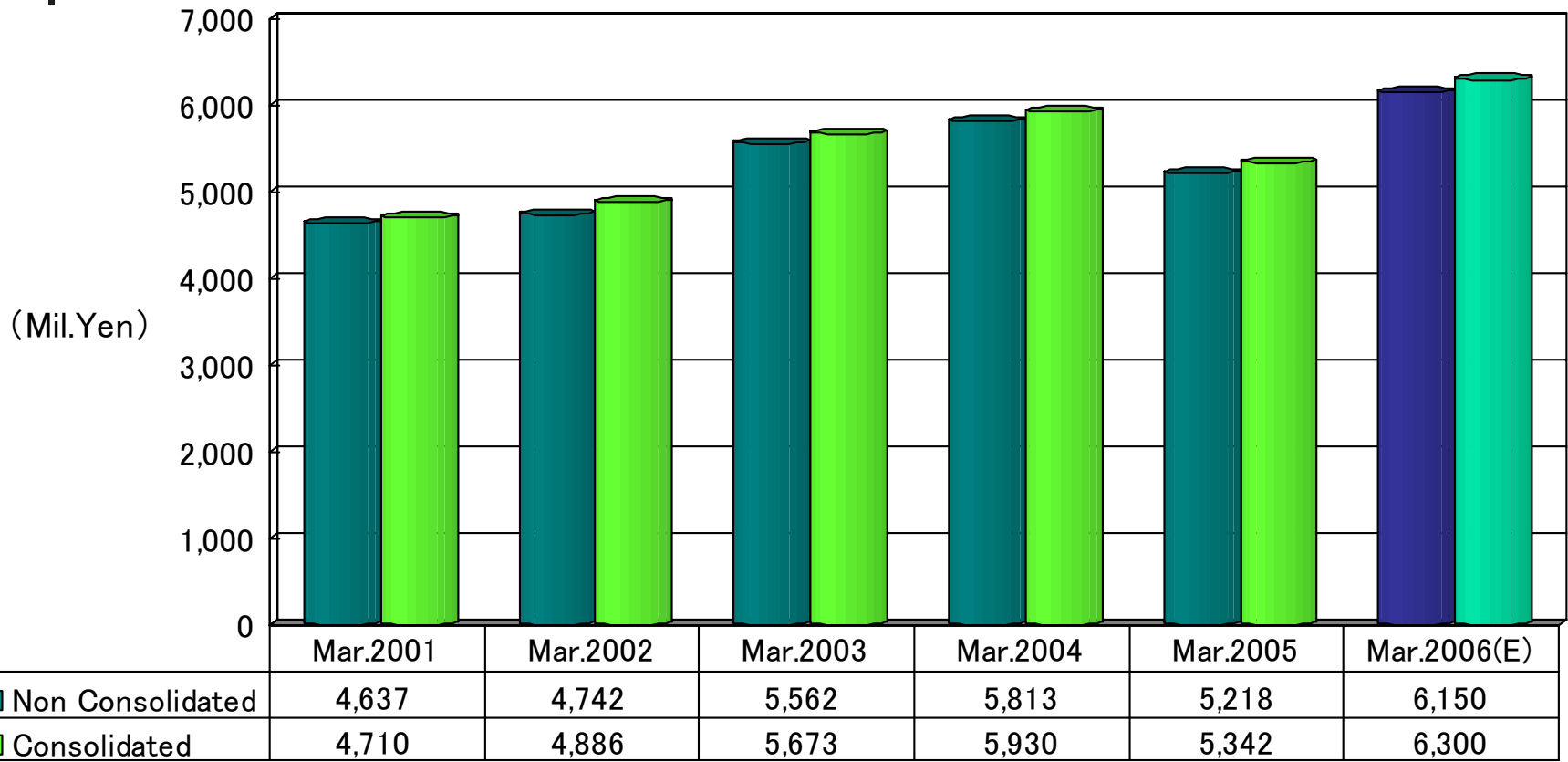
Operating Income



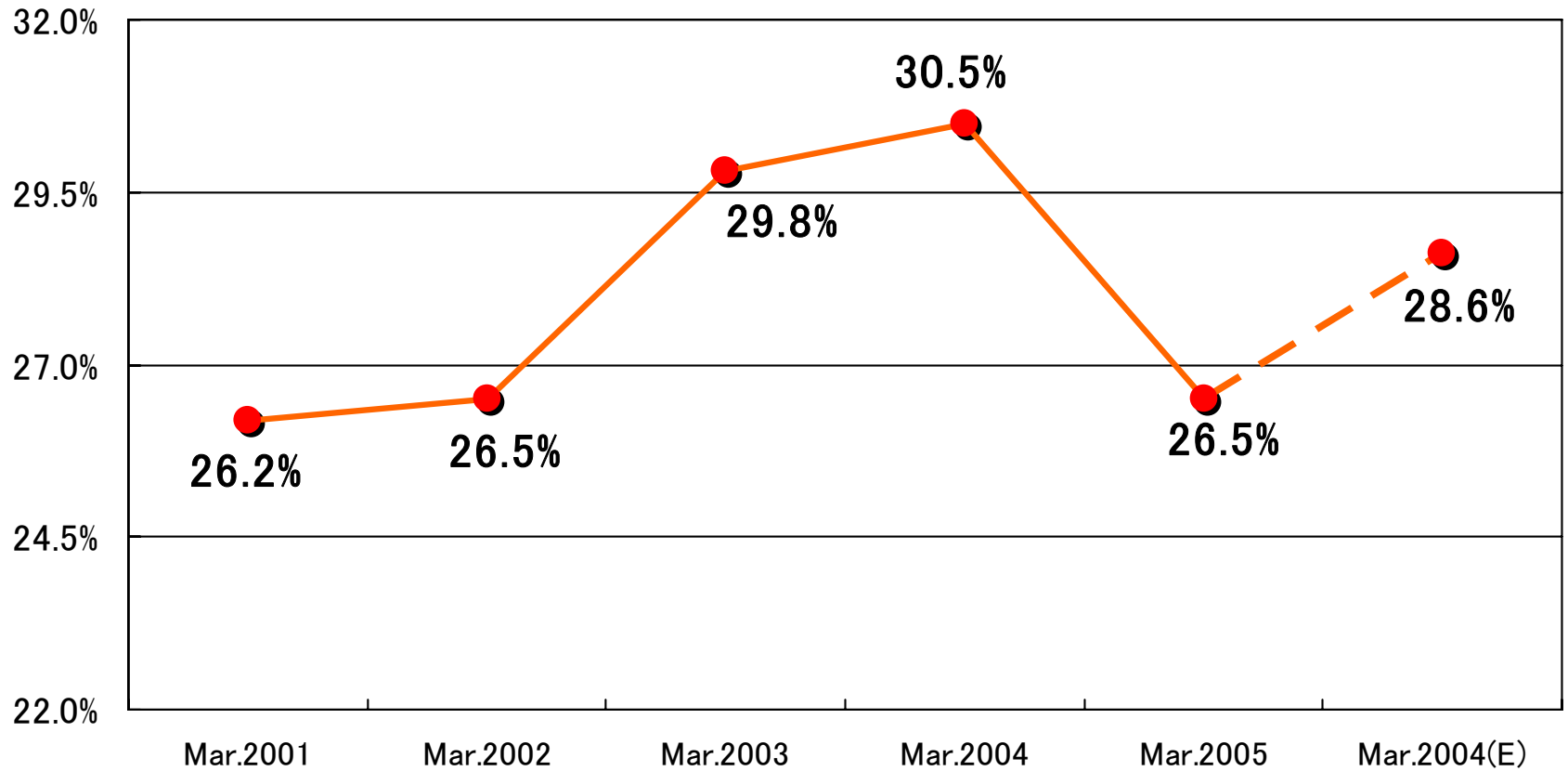
Operating Income Ratio



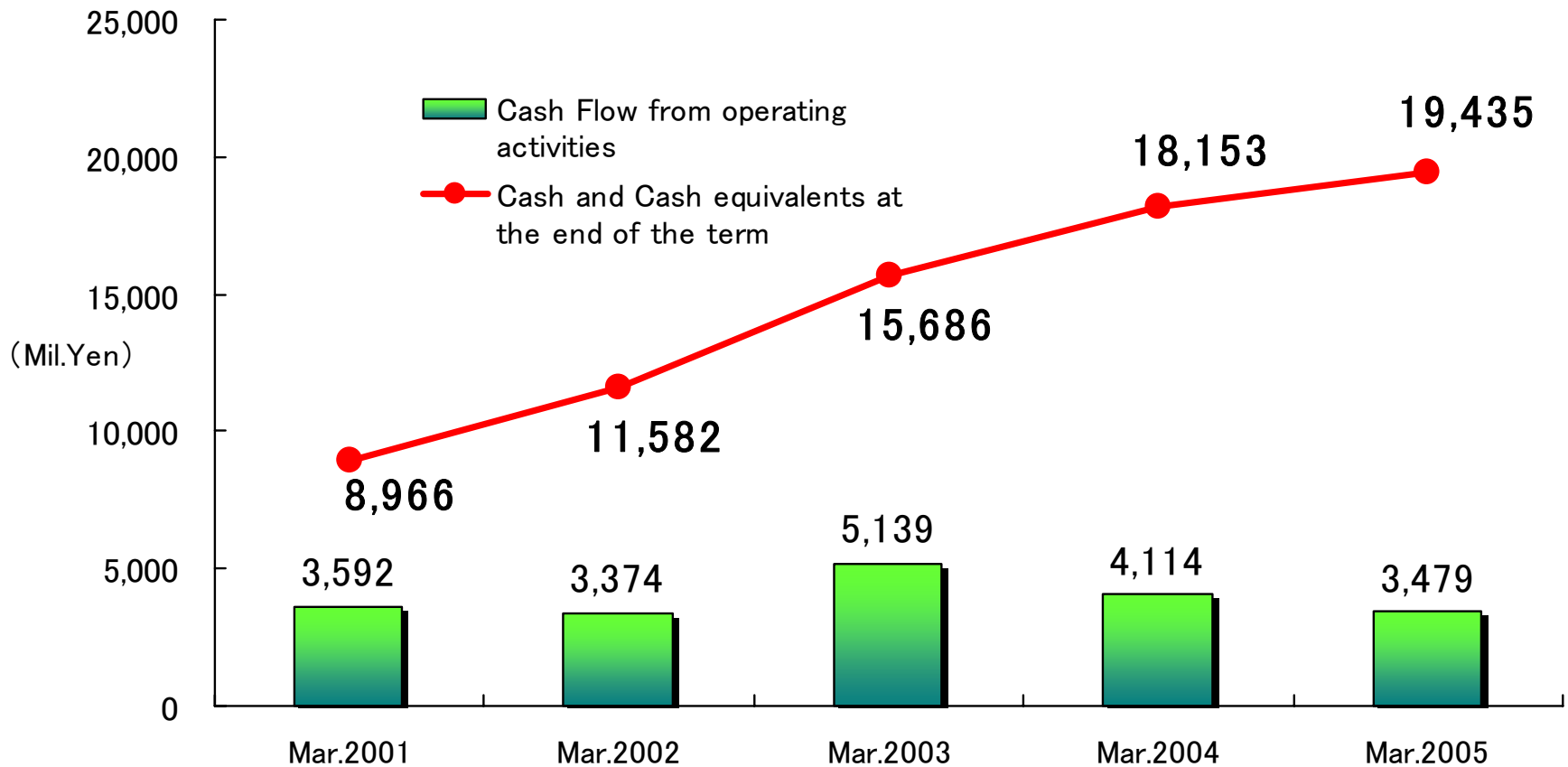
Ordinary Income



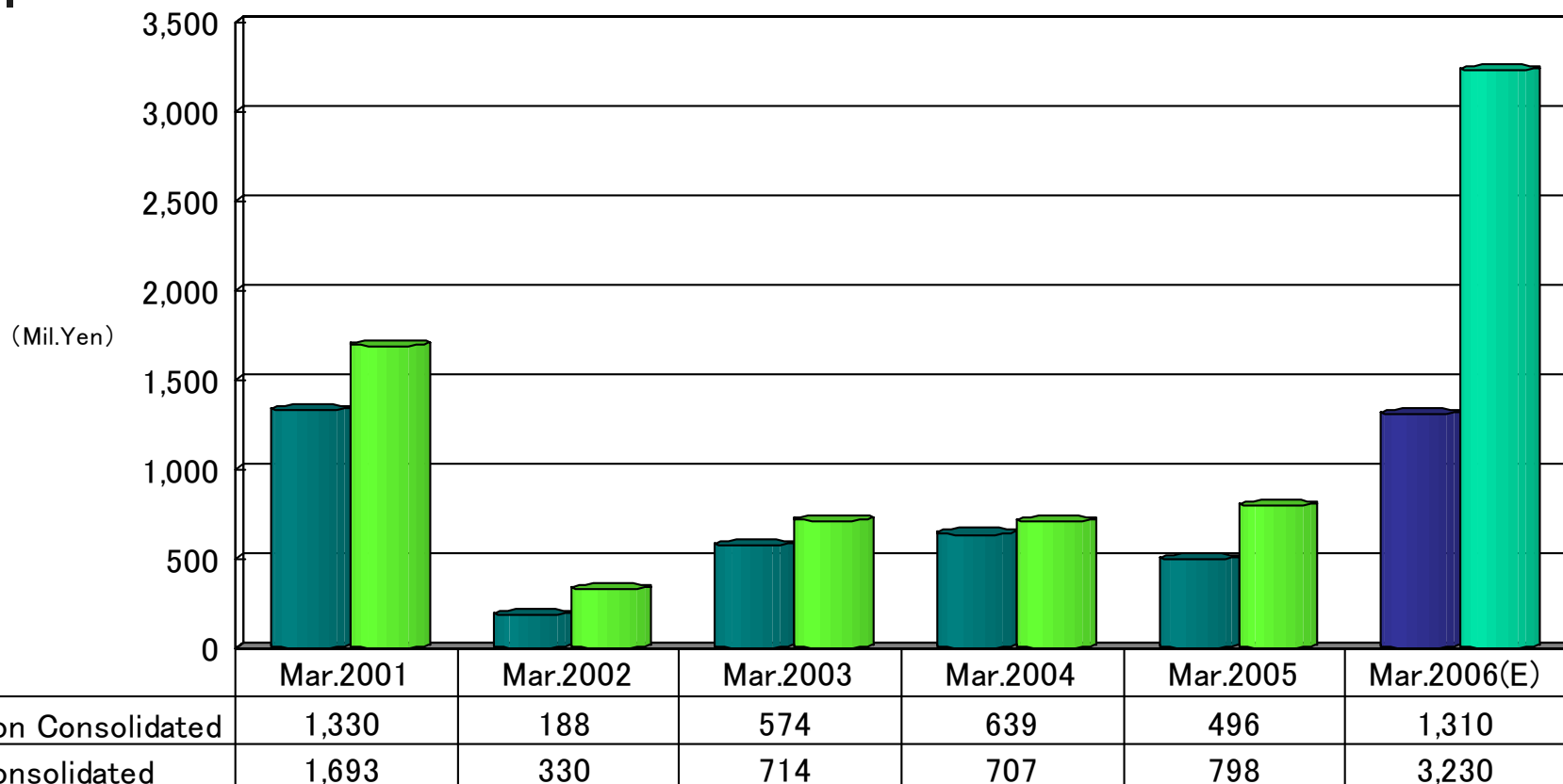
Ordinary Income Ratio



Cash Flow

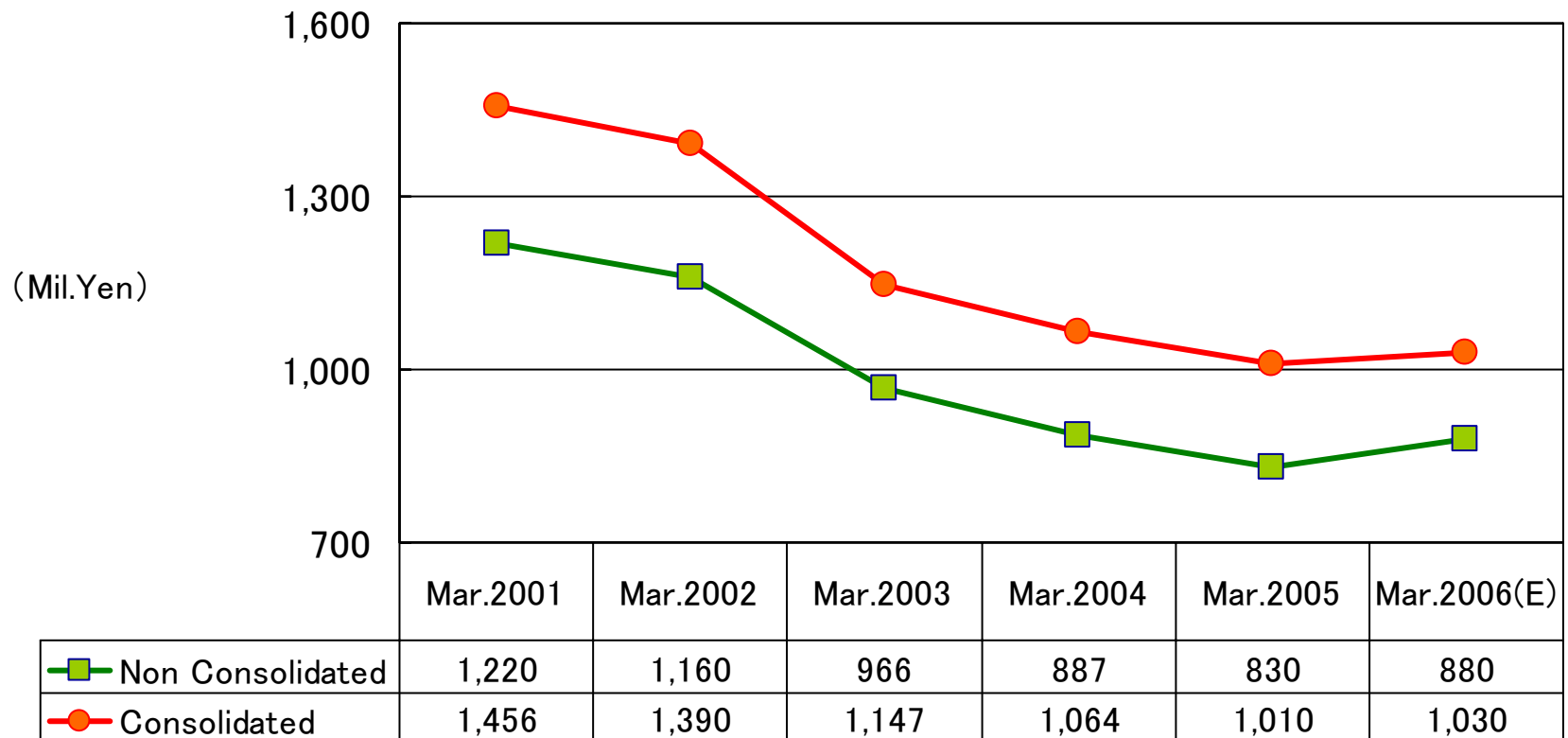


Capital Investment

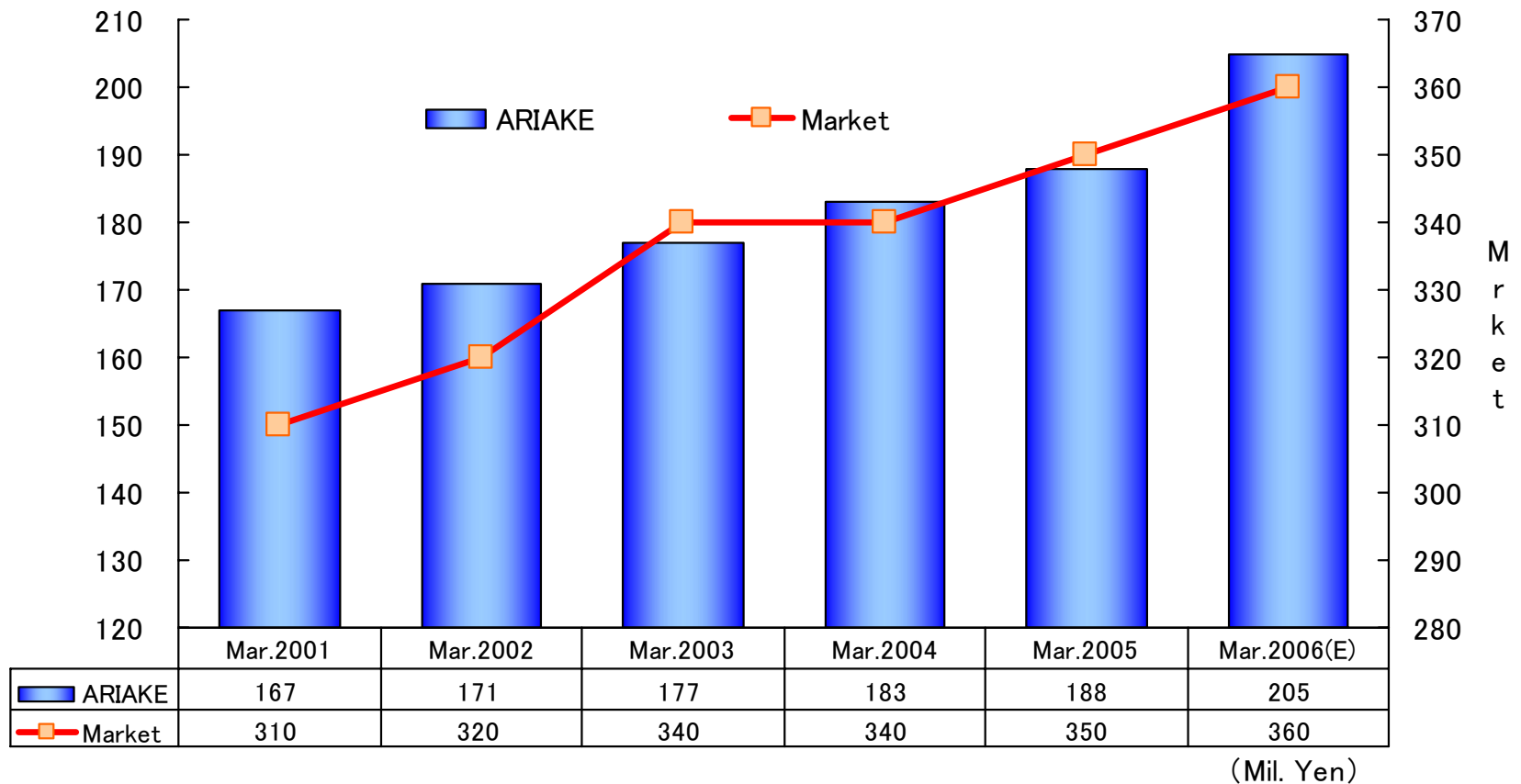


※平成18年3月データは計画

Depreciation Expense



Natural seasoning product market (beef, pork and chicken)





Contact

Management Coordination Dept.
Senior Executive Managing Director
Sueo Kikushima

TEL 81-3-3791-3301

FAX 81-3-3791-3307

E-mail: k-tabuchi@ariakejapan.com

Gift to Shareholders

